

# Global Health



## Pact has implemented health programs in 21 countries, improving access to health and social services for 1,143,787 people in 2023 alone.

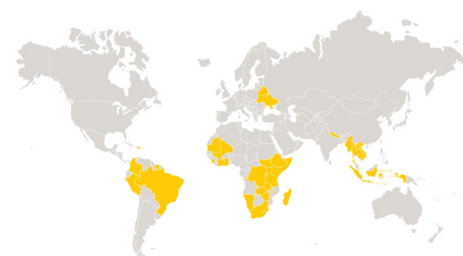
Working through local partnerships, our programs create impactful outcomes for healthier and more resilient communities, from expanding mental health services for war-impacted populations in Ukraine, strengthening supportive care structures for HIV-infected children and adolescents across Africa, and improving access to equitable health services for stigmatized communities such as migrants in the Dominican Republic.

### Our foundational approach to healthier communities

Across all our global health programs, Pact **engages communities** in the design, monitoring and evaluation of health services using approaches such as human-centered design, community-led monitoring and stakeholder consultation to ensure that programs are designed to address barriers to care and respond to their communities' needs. We **strengthen local partners** through grants and technical, organizational and institutional capacity building, enabling them to develop and sustain quality health and social services, products and information. By embedding our organization's expertise in capacity development (CD) across global health programs, Pact has enabled over 150 sub-partners to transition to direct donor funding in the past decade.

Pact's global health is **evidence and data-informed**, using diverse methods for applied learning and adaptive management. Engaging those we serve in decisions around the collection and use of evidence is fundamental to our vision for thriving, resilient and engaged communities leading their own development.

Our CD programming is integrative and partner-centric, focusing on **scalable and sustainable local solutions**. Pact collaborates with government and civil society organizations to advance their capacity to autonomously lead and manage public health and social welfare programming. We jointly assess strengths, identify challenges, set priorities and co-create action plans with measurable milestones. This comprehensive strategy includes enhancing leadership capacity, technical capacity for data-driven services, organizational capacity for operational systems and adaptive capacity for resilience.



Pact's health programming reaches 20+ countries around the world.

### Our Global Health Key Pillars

Our sustainable, community-led health programming has proven remarkably successful in addressing the **disease prevention, care and treatment needs** of diverse populations, including children, youth, pregnant and breastfeeding women, caregivers and families, marginalized groups and war-affected communities. By integrating and scaling evidence-informed health service interventions, we are optimizing the coordinated delivery of HIV, tuberculosis, reproductive health, maternal and child health, non-communicable disease

and mental health services. Our efforts have significantly improved access to preventive services, including pre-exposure prophylaxis, voluntary male circumcision, HIV testing and gender-based violence prevention and response. Our integrated health programming enhances continuity of HIV care and treatment and contributes to sustainability goals.

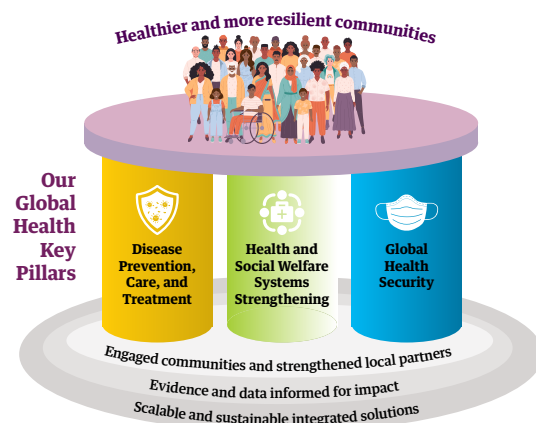
As part of our commitment to advancing global 95-95-95 HIV goals, we worked with local partners to design and implement highly effective models for differentiated care delivery, tailored specifically for children, adolescents and key populations, ensuring exceptional treatment outcomes and elevating the standard of care. Our orphans and vulnerable children (OVC) programming stands out for its profound impact. By fostering robust clinical-community collaborations and synergies, we delivered comprehensive case management services to over 600,000 HIV-infected and affected OVC and their caregivers in 2023.

Pact's **health and social welfare systems strengthening interventions** deliver outstanding improvements in service effectiveness, efficiency, and accountability. With Pact's technical and financial support, governments have made significant strides in health planning, costing and financing; updated technical policies, guidelines, and curricula; and enhanced performance and retention of the health and social welfare workforce, including vital networks of trained community cadres. In countries such as Eswatini, Dominican Republic, Zimbabwe, Tanzania and Zambia, Pact advanced programmatic data use by developing management information systems; digitizing case management tools; and refining processes for quality improvement. Under the USAID-funded *Public Health Systems Recovery and Resilience* activity, our health systems strengthening activities empower the Ukrainian government to respond to public health crises and to meet the increased need for mental health services. Under our global *Adolescents and Children HIV Incidence Reduction, Empowerment and Virus Elimination (ACHIEVE)* program, our social welfare strengthening activities with governments in eight countries have strengthened planning, financial, procurement and management information structures and procedures, driving significant progress in the quality, monitoring and coordination of HIV services for pregnant and breastfeeding women, infants, children and adolescents.

#### Our **expanding programming** focuses on:

- Integrated health programming
- Mental health and psychosocial support
- Non-communicable diseases
- Digitization / Digital health
- Government and community pandemic preparedness and response

Leveraging our global health and HIV programs, Pact enhances global health security by fortifying public health systems for the prevention, detection and response to infectious disease threats. Our community-based solutions for better health, which integrate with livelihoods, environment and governance approaches, empower local communities to effectively manage and recover from shocks and stresses such as war, conflict, climate crises and emerging disease risks. In collaboration with governments, we are applying invaluable lessons learned from the COVID-19 pandemic to elevate pandemic preparedness and enhance health systems, including health workforce development and outbreak response. Pact's community health initiatives are crucial for last-mile service delivery, thereby fortifying resilience and readiness for future public health challenges.



#### For More Information

**Gloria Sangiwa**

Vice President, Global Health

[gsangiwa@pactworld.org](mailto:gsangiwa@pactworld.org)

